



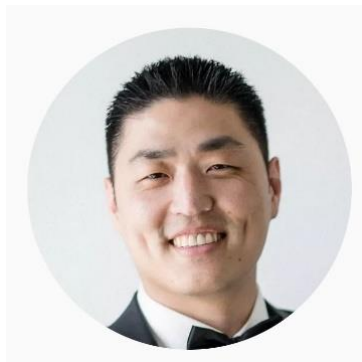
# MR PAUL'S TUTORING

Over 20 years of OC & Selective success

Suites 8 & 9, 153 George St, Liverpool NSW 2170 |  
[hello@MrPaulsTutoring.com.au](mailto:hello@MrPaulsTutoring.com.au) | Mob: 0424 770 319

TERM 1, 2024 | NEWSLETTER

## YEAR 6 COURSES



Hello boys and girls! I'm very excited to be teaching you all again this term. Are you as eager as I am?

Together, we will be building on our previous knowledge and learning more efficient tips and tricks to get ahead.

All we need from you is your openness to learn.

Let's get after it!

### Year 6 Courses available at a glance

Year 6 Core Course	Face to Face: Saturday, 1:30 PM – 5:30 PM Online Zoom: Saturday, 1:30 PM – 5:30 PM Sunday, 9:00 AM – 12:30 PM
Year 6 Selective Testing Course	Face to Face: Saturday, 9:30 AM - 12:30 PM Online Zoom: Sunday, 1:30 PM – 4:30 PM
Creative Writing & Memory Training	Wednesday: 4:00 PM – 7:00 PM
Free Homework Help	Monday: 4:00 PM – 7:00 PM

### *Reminder*

Earlybird discounts end  
15 December 2023



# Year 6 Core Classes

## COURSE DESCRIPTION

The Year 6 Core Course is the foundation upon which your child's learning is built. The teacher guides the students through each of the following subjects, ensuring they understand the topics and cover any questions they may have. These subjects include:



- Mathematics
- English / Reading
- Writing
- Thinking Skills

These subjects form the key learning areas for all primary students and are the main course offered Mr Paul's Tutoring.

**Maths:** Our Year 6 mathematics curriculum is designed to provide students with a comprehensive and advanced understanding of mathematical concepts. Topics covered include advanced geometry, fractions, decimals, percentages, algebraic expressions, and data analysis. Through interactive lessons, collaborative problem-solving, and real-world applications, students will deepen their mathematical reasoning and critical thinking skills. Our dedicated instructors guide students in mastering complex mathematical principles, ensuring they are well-prepared for the challenges of upper-level mathematics and equipped with a strong foundation for future academic endeavours.

**English:** Our Year 6 English curriculum is tailored to elevate language proficiency and literary appreciation. Students will engage with a diverse array of literary genres, including fiction, poetry, and informational texts. Advanced reading comprehension strategies and critical analysis skills take centre stage, empowering students to explore complex themes and narratives. The writing component focuses on honing sophisticated composition skills, encompassing narrative, persuasive, and expository writing. Through interactive discussions, thought-provoking activities, and creative writing exercises, students will not only refine their language mechanics but also deepen their understanding of literature, preparing them for the challenges of higher-level academics and beyond.

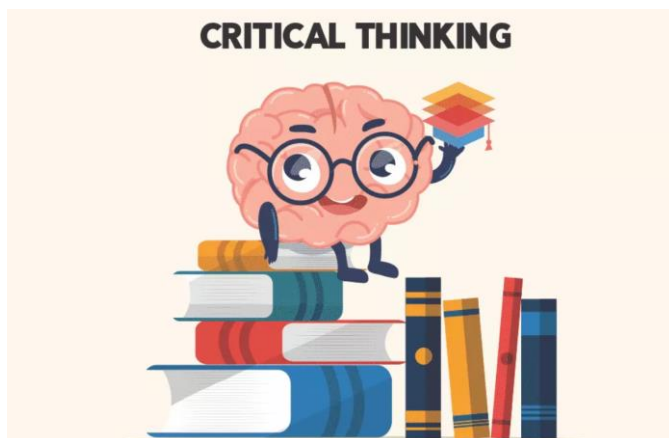
**Writing:** Our Year 6 writing curriculum is designed to elevate students' writing abilities to a sophisticated level. Throughout the course, students will delve into various genres, including narrative, persuasive, and informational writing. Emphasis is placed on refining complex sentence structures, enhancing vocabulary, and developing a distinct writing style. Interactive activities and creative writing exercises challenge students to express themselves with depth and precision. Through constructive feedback and collaborative discussions, our writing lessons aim to cultivate confident and articulate writers, preparing them for the nuanced demands of advanced writing in their academic journey and beyond.

**Thinking Skills:** Our Year 6 curriculum in Thinking Skills is crafted to cultivate advanced critical thinking, problem-solving, and decision-making abilities. Through a series of engaging activities and projects, students are encouraged to analyse complex situations, think creatively, and approach challenges with a strategic mindset. The curriculum emphasises higher-order thinking, fostering skills such as evaluation, synthesis, and effective communication. Students will explore real-world scenarios, encouraging them to apply their thinking skills to practical situations. Our goal is to empower Year 6 students with the cognitive tools and intellectual agility needed for success in academics and beyond.

### **WILL THERE BE HOMEWORK?**

Yes. Homework is an important aspect of learning as it consolidates the strategies taught by the teacher and allows students to put into practice what they've learned.

We offer FREE Homework Help classes on Zoom every Monday.



## HOW ARE THE CLASSES RUN?

- **In-Person Classes:** These sessions take place in Liverpool once a week. During these face-to-face classes, the teacher introduces the topic, works through examples with the students, and addresses any queries they may have.
- **Online [Zoom](#) Classes:** Conducted weekly, these virtual classes over Zoom provides an interactive online learning experience.

## YEAR 6 CORE COURSE TIMETABLE & TUITION FEES

### FACE TO FACE LESSONS:

Year 6 Core: Face to Face lessons				Saturday		1:30 PM - 5:15 PM		
Course name	Day	Start date	End date	Tuition fee / week	No. of weeks	Material fee	Course total	Earlybird discount*
Year 6 Core Course	Saturday	27 January	13 April	\$70	12	\$85	\$925	\$855 (save \$70)

### ONLINE [Zoom](#) LESSONS:

Year 6 Core: Online lessons				Saturday		1:30 PM - 5:15 PM		
				Sunday		9:00 AM - 12:30 PM		
Course name	Day	Start date	End date	Tuition fee / week	No. of weeks	Material fee	Course total	Earlybird discount*
Year 6 Core Course	Friday	2 February	19 February	\$65	12	\$85	\$865	\$800 (save \$65)

\*Early Bird Discount Offer prices are valid for full term payments by Saturday, 15 December 2023.  
1.5% credit card surcharge applies, we only accept VISA or MASTERCARD.

# Creative Writing Course & Speed Maths Course

A 3-hour writing course tailored for students aspiring to elevate their writing skills. Led by Mr. Paul, this program not only delves into the intricacies of effective writing but also offers an exciting bonus – a comprehensive session on speed maths. For those eager to acquire the techniques of swift mathematical problem-solving, this additional segment enhances the overall learning experience.

This course will develop students' skills, including:

- ✓ how to approach a writing question
- ✓ grammar essentials
- ✓ punctuation
- ✓ developing sentences
- ✓ vocabulary enrichment
- ✓ individual writing feedback each week
- ✓ Memory training
- ✓ Speed maths - learn the fastest way to calculate!



Choice between Online Zoom or Face to Face lessons.

Course name	Day	Start date	End date	Tuition fee / week	No. of weeks	Material fee	Course total	Discount for CORE students
Creative Writing & Memory Training	Wed	31 January	10 April	\$45	11	-	\$495	\$440 (save \$55)





# Year 6 Selective Testing Course

## COURSE DESCRIPTION

Mr Paul's name is synonymous with Selective High School success. His teaching techniques are geared towards teaching students the most effective and efficient ways to answer selective placement test questions.



## MODE OF DELIVERY

- Face to Face, in-person at Liverpool
- Online Zoom

## HOW DOES THE FACE-TO-FACE SELECTIVE COURSE WORK?

1. Students are given the paper test at the start of the lesson.
2. After a short break, Mr Paul will review each of the test questions with the students.
3. Students may re-attempt the test again online at any time during the term.

## HOW DOES THE ONLINE ZOOM COURSE WORK?

1. Students are given access to an online selective test starting Monday each week. Students may attempt the tests anytime between those days.
2. Mr Paul will review each of the test questions with the students each Sunday via Zoom.

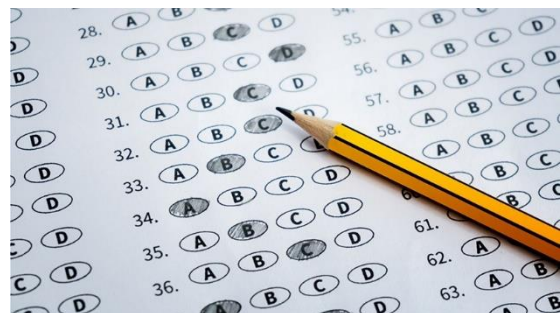
## TEST SCHEDULE THROUGHOUT THE TERM

Week 1 (3 hours - test and review)

- Mathematical Reasoning
- Reading

Week 2 (3 hours - test and review)

- Thinking Skills
- Writing



## TEST SCHEDULE / TERM

### Remaining 2024 Course

- January Holiday Course, January 2024 - 10 tests over five days
- Term 1, 2024 - 12 tests
- April Holiday Course, April 2024 - 10 tests over five days
- Term 2, 2024 - 2 tests

## SELECTIVE PLACEMENT TEST QUESTIONS

Each week, Mr. Paul will lead students through the intricacies of these questions, enabling them to discern the question's true intent, approach it effectively, and employ the best strategy for solving it.

Upon completion of this course, students will:

## BENEFITS OF TAKING THIS COURSE

By participating in our Selective Testing Course, students will:

- ✓ **Familiarise themselves with exam-style questions:** Gain valuable exposure to questions similar in style and complexity to those found in the actual Selective Placement Test. This familiarity will enable students to approach the exam confidently and with ease.
- ✓ **Build confidence and overcome exam nerves:** Our experienced instructors provide a supportive learning environment that helps students overcome exam anxiety. By gaining confidence through repeated practice and receiving constructive feedback, students will be better equipped to tackle the Selective Placement Test with composure and self-assurance.
- ✓ **Acquire essential exam tips and strategies:** Learn valuable techniques and strategies from our expert teacher (Mr Paul Kim). These insights will equip students with effective approaches to solve complex problems and maximise their performance in the Selective Placement Test.

Don't miss this invaluable opportunity to prepare for the Selective Placement Test.

Enrol now and give your child the advantage they need to excel in this important academic milestone.

**YEAR 6 SELECTIVE TESTING COURSE TIMETABLE & TUITION FEES**

Choice between Online Zoom or Face to Face lessons.

**IN-PERSON, FACE TO FACE LESSONS:**

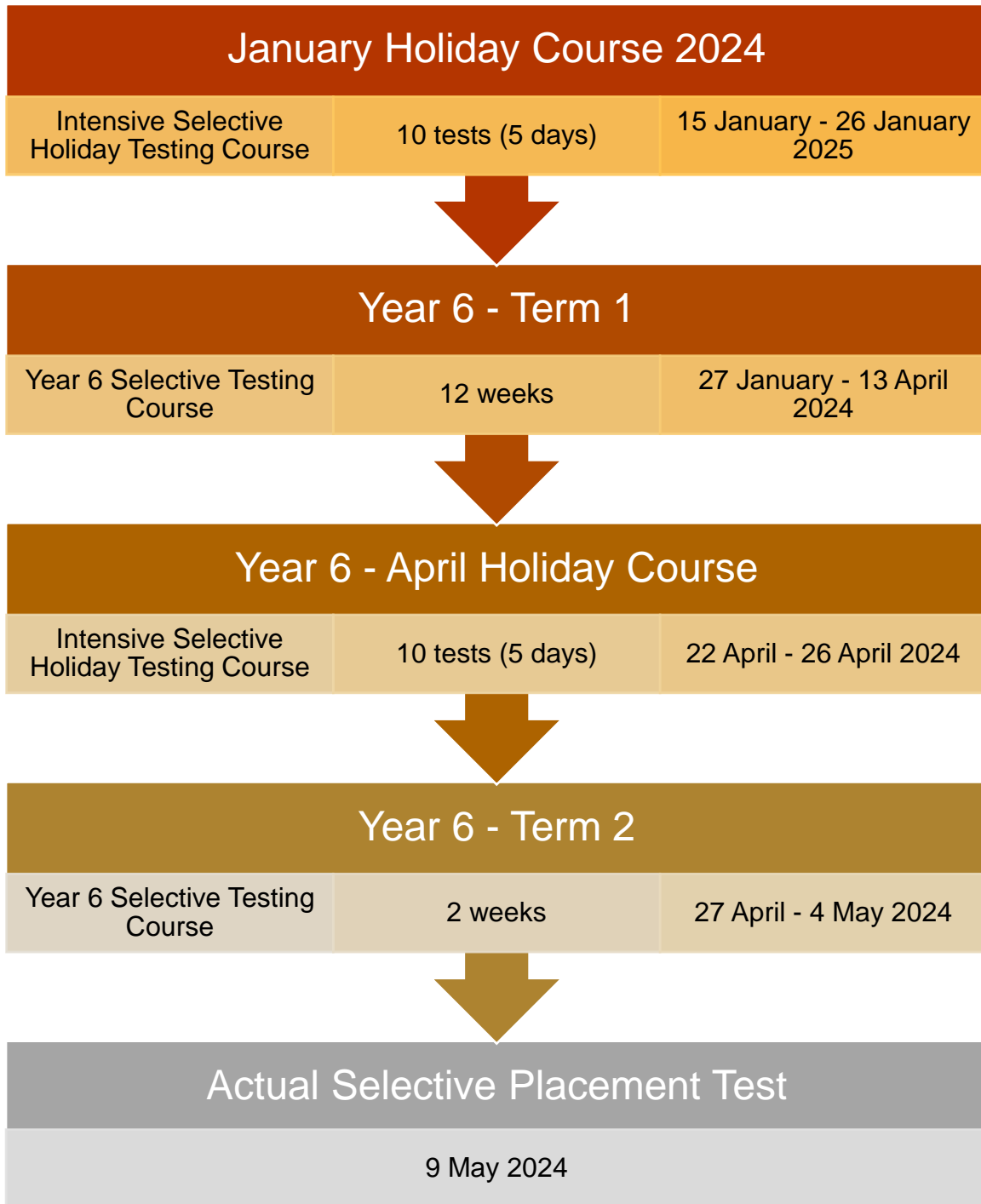
Selective Foundation Course: Face to Face lessons				Saturday		1:30 PM - 3:30 PM		
Course name	Day	Start date	End date	Tuition fee / week	No. of weeks	Material fee	Course total	Discount for Core Students*
Year 6 Selective Foundation Course	Saturday	27 January	13 April	\$65	12	-	\$780	\$720 (\$60/wk)

**ONLINE zoom LESSONS:**

Selective Foundation Course: Online lessons				Friday		4:00 PM - 7:30 PM		
Course name	Day	Start date	End date	Tuition fee / week	No. of weeks	Material fee	Course total	Discount for Core Students*
Year 6 Selective Foundation Course	Tuesday	30 January	16 April	\$60	12	-	\$720	\$660 (\$55/wk)



# The Year 6 Selective Placement Journey





# January School Holiday

## Selective Test Preparation Course

*Make the most of these school holidays!*

Mr. Paul will be running a specialised two-week program during the January school holidays, with a specific focus on addressing key subjects related to the Selective Placement Test. This program aims to provide comprehensive and targeted preparation for students who are gearing up for the test. By honing in on the essential topics, participants can expect a thorough understanding and strategic approach to excel in the Selective Placement Test.

January 2024							
Mo	Tu	We	Th	Fr	Sa	Su	
1	2	3	4	5	6	7	
8	9	10	11	12	13	14	
Week 1	15	16	17	18	19	20	21
Week 2	22	23	24	25	26	27	28
	29	30	31				

### WEEK 1 - Year 6 SELECTIVE FUNDAMENTALS COURSE

The Year 6 SELECTIVE FUNDAMENTALS COURSE will start on Monday, 15 January, 2024. This comprehensive program will encompass all the **essential topics required for Maths, Reading, Writing and Thinking Skills** to prepare students for the 2024 selective high school exam.

In each lesson, Mr. Paul will comprehensively review fundamental question topics, allowing students to solidify their understanding of each test component and strengthen their foundational knowledge. This course is designed to instil confidence in students as they prepare for the exam. We will also analyse past selective test papers throughout the week.

### **Week 1 - Course Dates**

- Day 1: Monday, 15 January 2024
- Day 2: Tuesday, 16 January 2024
- Day 3: Wednesday, 17 January 2024
- Day 4: Thursday, 18 January 2024
- Day 5: Friday, 19 January 2024

**Course delivery format:** Choice of Face to Face (in Liverpool), or online Zoom.

### **Week 2 - SELECTIVE TESTING COURSE**

Designed specifically for Year 6 students, this comprehensive 5-day course will provide a final boost of practice and preparation before the important tests.

Each day, students will take tests in Reading, Mathematical Reasoning, Thinking Skills and Writing, followed by a thorough review of all the questions to enhance their learning experience.

### **Week 2 - Course Dates**

- Day 1: Monday, 22 January 2024
- Day 2: Tuesday, 23 January 2024
- Day 3: Wednesday, 24 January 2024
- Day 4: Thursday, 25 January 2024
- Day 5: Friday, 26 January 2024

### **Tuition Fees**

**Week 1: \$650**

**Week 2: \$650**

**Discount for 2-week enrolment: **\$1,200** (save \$100)**

\$150 / day for enrolments less than 5 days. The tuition fee is payable in advance.

# Selective Placement Test Information



## What are Selective High Schools?

Selective high schools are specifically designed to provide optimal learning conditions that will make a difference in supporting academic talent development and the well-being of high-potential and gifted students.

## The 4 Types of Selective High Schools:

- Fully selective high schools
- Partially selective high schools
- Agricultural high schools
- Aurora College (offered to rural and remote students)

There are fully selective, partially selective and agricultural high schools offering Year 7 placement throughout NSW.

1. **Fully selective high schools:** There are 17 fully selective high schools in NSW. In these schools, all classes are academically selective.
2. **Partially selective high schools:** There are 27 partially selective high schools in NSW taking Year 7 students, where one or two classes are selective while other classes are non-selective for local students. The students in the selective classes participate in separate English, mathematics and science classes. They generally join the non-selective students for classes in other subjects.

Younger or older siblings of students placed in partially selective high schools are not guaranteed approval for an out-of-area placement there if it is not their local high school.

3. **Agricultural high schools:** There are four fully selective agricultural high schools located throughout NSW. Agricultural high schools are selective high schools which emphasise the study of agriculture—they are a mix of

boarding and day placement. Isolated students receive extra consideration for boarding places.

### What is the Selective Placement Test like?

The test in 2024 is paper-based. The test consists of 3 test components: Reading, Mathematical Reasoning, and Thinking Skills, in that order.

Section	Minutes	Questions	Type	Weighting
Reading	40	30	Multiple choice	25%
Mathematical reasoning	40	35	Multiple choice	25%
Thinking Skills	40	40	Multiple choice	35%
Writing	30	1	Open response	15%

**Reading Test:** The reading test consists of 30 questions. Students have 40 minutes to complete the test. The questions are based on a diverse range of texts and assess a range of reading skills. The answers are all multiple-choice.

The reading test questions are based on different genres such as non-fiction, fiction, poetry, magazine articles and reports.

**Mathematical Reasoning Test:** The mathematical reasoning test consists of 35 questions. Students have 40 minutes to complete the test. The answers are all multiple-choice.

The mathematical reasoning test assesses the student's ability to apply mathematical understanding and knowledge to problems, with questions drawn from a range of mathematical content areas.

**Thinking Skills Test:** The thinking skills test consists of 40 questions. Students have 40 minutes to complete the test. The answers are all multiple-choice.

The thinking skills test assesses the student's ability in critical thinking and problem-solving. There are a range of different question types in the test.

No previous knowledge is required for this test.

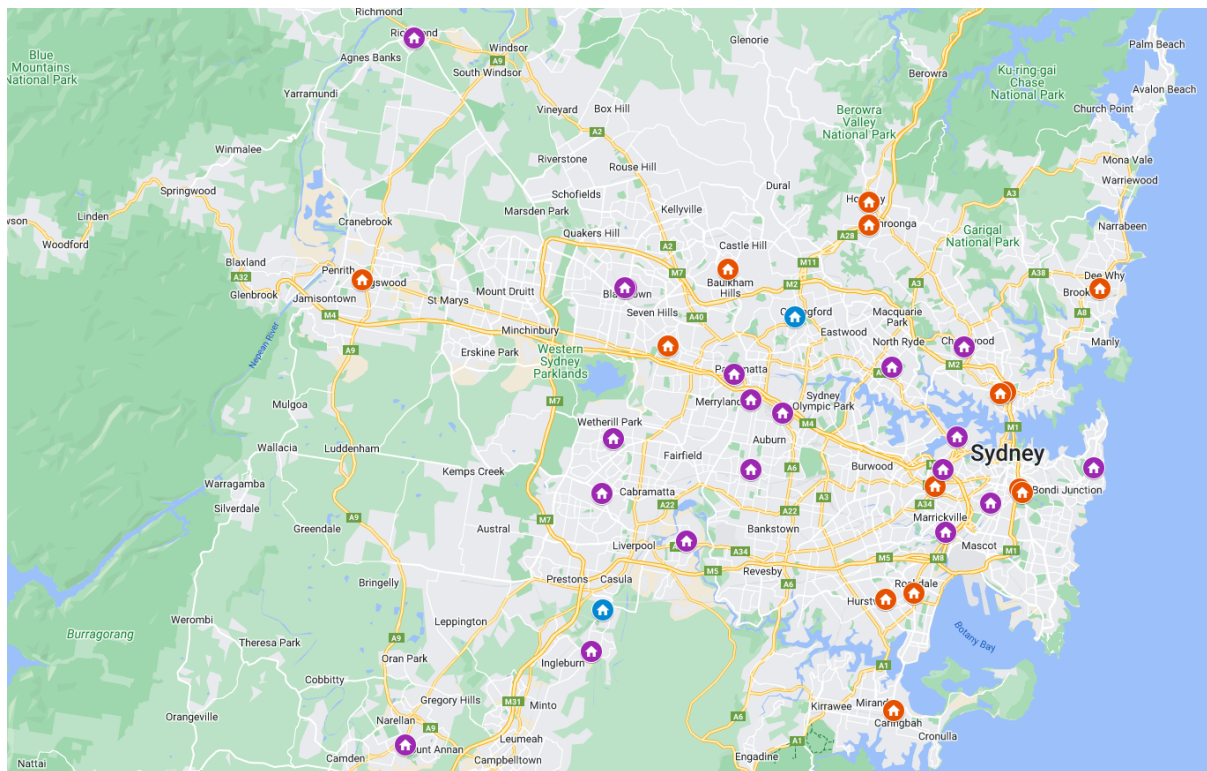
**Writing Test:** The writing test consists of a topic about which students must write according to the instructions. Students have 30 minutes to complete the test. The test assesses the student's creativity of ideas and ability to write effectively for a purpose and audience. The test will also assess grammar, punctuation, spelling and vocabulary. Students who do not address the topic in their writing, regardless of fluency or creativity, will receive low marks.

# Selective High Schools

There are 47 selective high schools for Year 7 entry each year, including an online class, Aurora College, for rural and remote students.

- 17 selective high schools
- 25 partially selective high schools
- 4 agricultural selective high schools (some offer boarding)

A virtual class, Aurora College, is available for rural and remote students in 182 authorised host schools.



## Places available in selective high schools

There are 4,248 places available in selective high schools for entry to Year 7.

School name	Number of places
Alexandria Park Community School +	30
Armidale Secondary College	30
Auburn Girls High School	30
Aurora College (Virtual) #	90
Baulkham Hills High School	180
Blacktown Boys High School	30
Blacktown Girls High School	30
Bonnyrigg High School	60



Caringbah High School	150
Chatswood High School	60
Elizabeth Macarthur High School	60
Farrer Memorial Agricultural High School (Boarder places)	60
Farrer Memorial Agricultural High School (Day places)	50
Fort Street High School	150
Girraween High School	120
Gorokan High School	30
Gosford High School	180
Grafton High School	30
Granville Boys High School	30
Hornsby Girls High School	120
Hurlstone Agricultural High School (Day places)	120
Hurlstone Agricultural High School (Female boarder)	15
Hurlstone Agricultural High School (Male boarder)	15
James Ruse Agricultural High School	120
Karabar High School	30
Koorringal High School	30
Macquarie Fields High School	90
Merewether High School	180
Moorebank High School	60
Normanhurst Boys High School	120
North Sydney Boys High School	150
North Sydney Girls High School	150
Northern Beaches Secondary College Manly Campus	120
Parramatta High School	60
Peel High School	30
Penrith High School	150
Prairiewood High School	60
Richmond High School - Richmond Agricultural College	30
Rose Bay Secondary College +	60
Ryde Secondary College	60
Sefton High School	88
Smiths Hill High School	120
St George Girls High School	150
Sydney Boys High School	180
Sydney Girls High School	150
Sydney Secondary College Balmain Campus *	60
Sydney Secondary College Leichhardt Campus *	60
Sydney Technical High School	150
Tempe High School +	60
Yanco Agricultural High School (Female boarder)	30
Yanco Agricultural High School (Male boarder)	30

# Free selective consultations with Mr Paul



If you would like to discuss your child's progress with Mr Paul or seek guidance in choosing the most suitable selective school, we welcome you to schedule a Zoom consultation.

To make your booking, please visit [www.MrPaulsTutoring.com.au/contactus](http://www.MrPaulsTutoring.com.au/contactus)

We look forward to assisting you in ensuring the best educational journey for your child.



**Kha-Thi Tong Ho**

1 review



★★★★★ 6 months ago

I have had the privilege of learning under the guidance of Mr. Paul since Year 4, and I am truly humbled by the remarkable journey it has been. His lessons have not only been insightful and practical, but also infused with genuine care and patience for every student in the class. Mr. Paul's wholehearted encouragement has instilled in me a profound sense of confidence, inspiring me to consistently strive for excellence.

I further emphasise my heartfelt gratitude to Mr. Paul for placing unwavering faith in my abilities even when I doubted myself. The invaluable knowledge he has imparted to me is a cherished treasure that I hold dear. Additionally, I would like to extend my sincere appreciation to Mrs. Joey for her unwavering support and consideration. Without the combined efforts of Mr. Paul and Mrs. Joey, I would not have achieved my dream of securing a scholarship at a prestigious private school for girls as well as a selective position at Hornsby Girls. The depth of my gratitude and admiration for both of them cannot be adequately expressed in words.

It fills me with sheer delight to have had the privilege of being taught by Mr. Paul and I am profoundly grateful for everything he has done for me. ★★★★★



Warm Regards,  
K.T Tong-Ho



**Abrar Zaman**



1 review

★★★★★ 11 months ago

I highly recommend attending Mr Paul's tutoring as he prepares you for OC and Selective in immense style and his teaching is one of a kind. I had firsthand experience of Mr Paul as he was my teacher who guided me during my selective preparation, my 1 year of studying under him, I gained confidence within my work as he displayed multiple strategies and trained you to reach the extra mile. Also his engaging lessons enable you to enjoy studies and creates a new mindset, a mindset for success. Mr Paul's tutoring is amazing and I totally suggest you to enroll!



**Elayne Huynh**



1 review

★★★★★ a year ago

As an ex student of Mr Paul's, I can definitely say that he is one of the best tutors for selective training. He gave me and my class the confidence to achieve our best results. He is highly experienced, proven by all of his student's great results, and creates an engaging and humorous work environment.

Personally, Paul significantly helped me in with maths skills, teaching me the most efficient ways to handle **exam** style questions. I went from being an average student to achieving one of the highest marks in my cohort.

He may be strict at times, but he taught my class to have a good work ethic which was essential to reaching our potential. Paul genuinely cares for his students, and is motivated by results, not business. His dedication, effort and experience really is unparalleled in this industry, and you definitely wouldn't be wasting your time here.

I truly recommend his tutoring service for any student looking to excel academically.



**Sanjay Karnan**



1 review

★★★★★ a year ago

Mr Paul's Tutoring is a great tutoring centre as it provides you great training in whatever **exam** you do (or just general tutoring). It is vital for you to join as you would have 100% success. I unquestionably suggest attending Mr Paul's Tutoring if you want to get better academically. Thanks Mr Paul for helping us. After doing the selective **test** now, I feel so brave and better that it is over and I think that I have done good in it